



# Woodsome Avenue, Mirfield



follow your heart home...  
to Woodsome Avenue, Mirfield.

A joint development between Towngate Homes and Cookson Homes.





# Woodsome Avenue, Mirfield

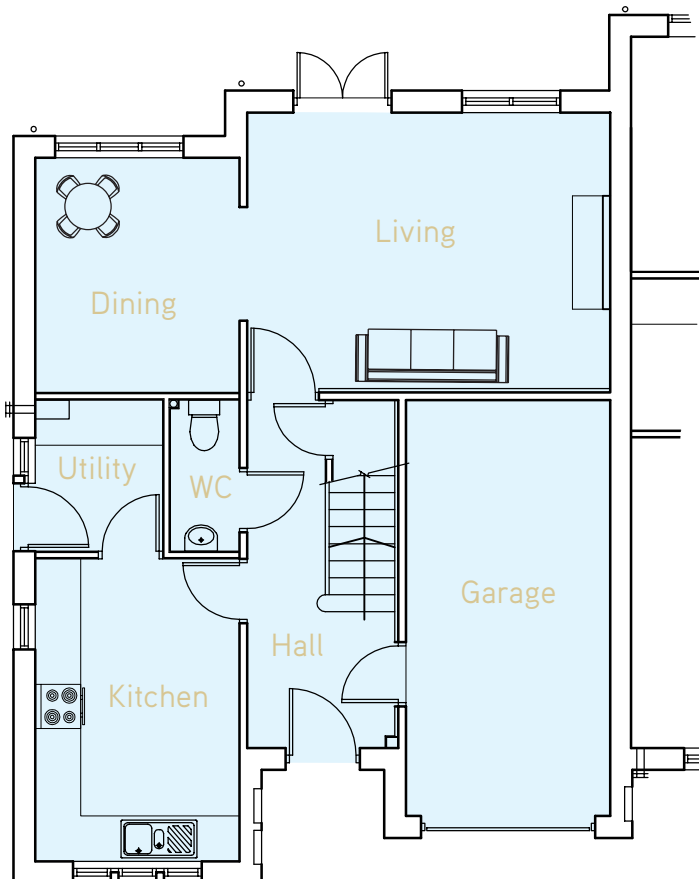


 **Lowngate Homes Ltd**  
*Craftsman Built Homes*

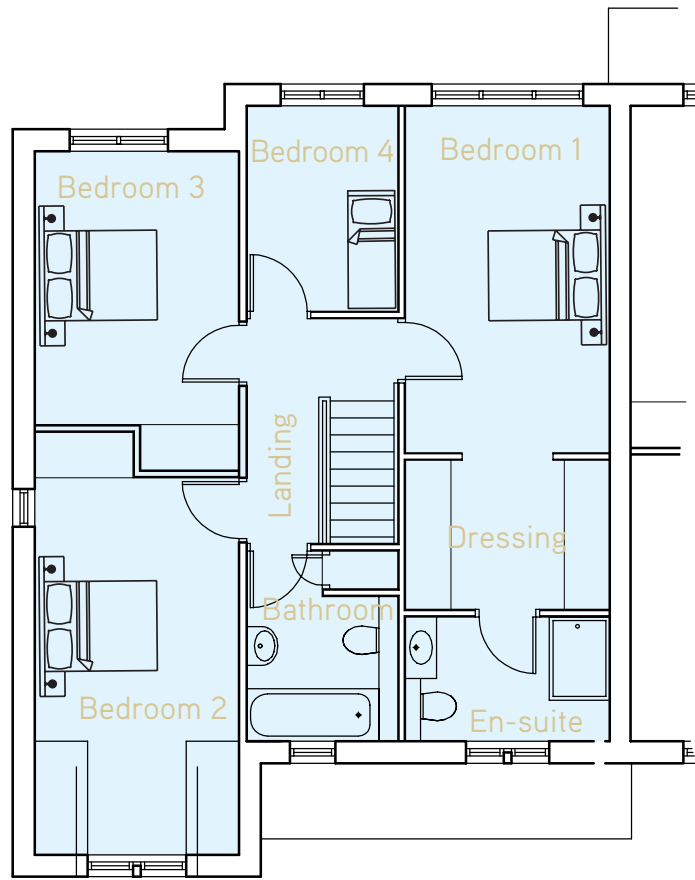


## PLOTS 1 & 3

### Town House



GROUND FLOOR



FIRST FLOOR

#### Specification:

Windows – Cills to be painted timber.

Doors – 1981mm high, white 6 panelled doors.

Heating System – Gas fired central heating system, with white painted steel radiators, time clock, room thermostat, installed to NHBC class 1 standards.

Security– Supplied with a burglar alarm system to BS4737 (Part 1 1986) including external door detectors and PIR detectors.

#### Kitchen:

Choice of oak style kitchen – Hamilton range.

Double oven, fridge freezer, laminate worktops, dishwasher, stainless steel sink unit with mono mixer. Hob and extractor mounted in base units.

#### Bathroom:

White bathroom suite, with close coupled w.c. suite with basin and pedestal. Chrome mixer taps and chrome plated heated ladder towel rail.

#### Ensuite:

Cast resin shower tray, thermostatic shower, glass shower screen. Close coupled w.c. suite, w.h. basin and pedestal. Chrome plated heated ladder towel rail.

# Woodsome Avenue, Mirfield



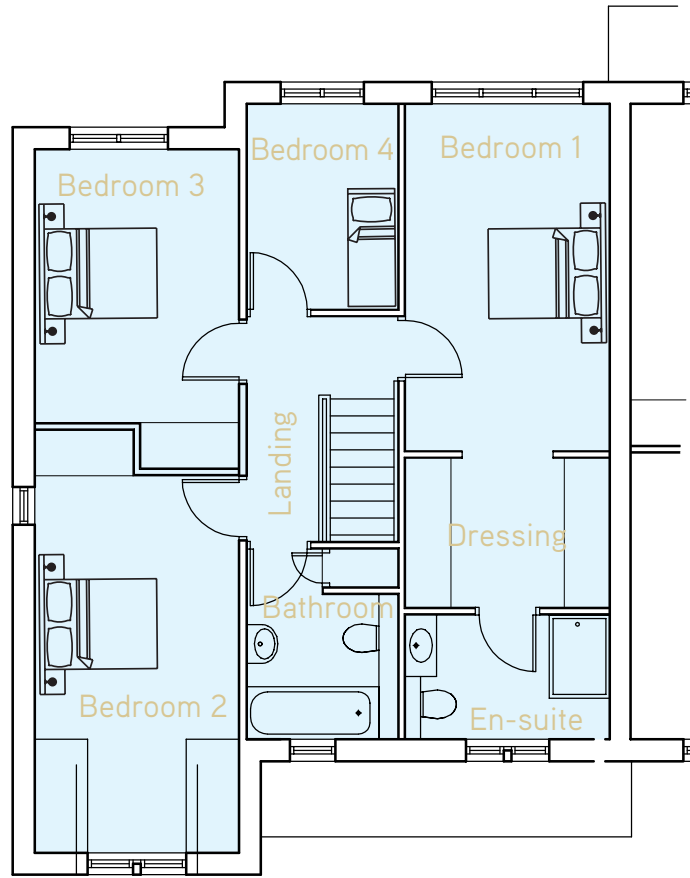
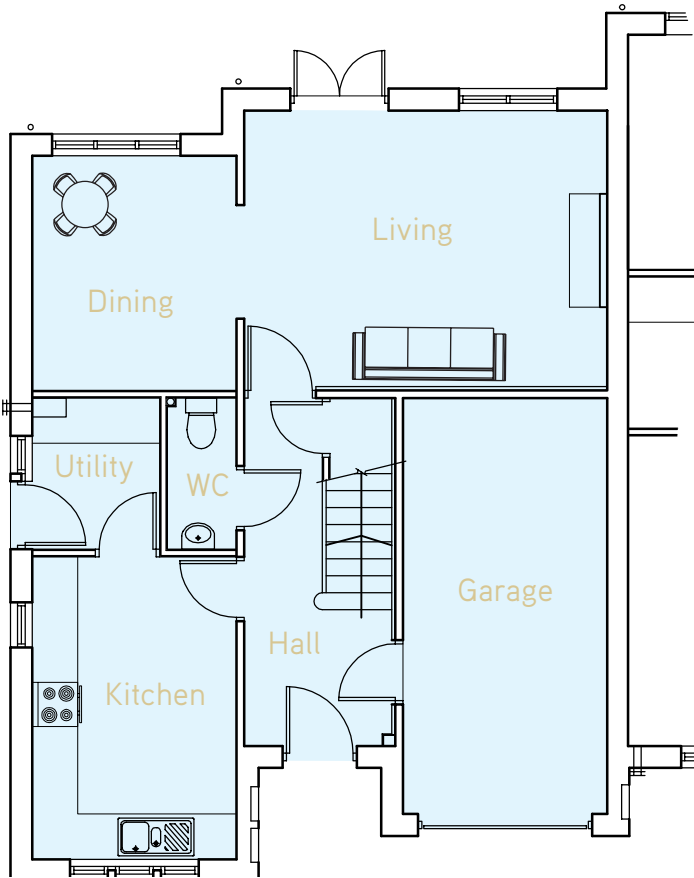
Towngate Homes Limited:  
Burdwell Works, 172 New Mill Road,  
Brockholes Huddersfield HD9 7AZ  
t: 01484 667777 f: 01484 662777  
julia\_hill@towngate.plc.uk www.towngatehomes.co.uk

Cookson Homes  
Head Office:  
1 Firth Street Huddersfield HD1 3BB  
t: +44 (0) 1484 530084  
f: +44 (0) 1484 543795  
info@cooksonhomes.com  
www.cooksonhomes.com



## PLOTS 1 & 3

### Town House



#### GROUND FLOOR

- LOUNGE:**  
4.8m x 3.7m
- DINING:**  
3.1m x 2.7m
- KITCHEN:**  
2.7m x 4.0m
- UTILITY:**  
1.7m x 2.0m
- WC:**  
0.9m x 2.0m
- HALL:**  
2.0m x 4.6m
- GARAGE:**  
2.7m x 5.5m

#### FIRST FLOOR

- BEDROOM 1:**  
4.6m x 2.7m
- EN-SUITE:**  
1.6m x 2.7m
- DRESSING ROOM:**  
2.0m x 2.7m
- BEDROOM 2:**  
5.6m x 2.7m
- BEDROOM 3:**  
3.6m x 2.7m
- BEDROOM 4:**  
2.0m x 2.7m
- BATHROOM:**  
2.5m x 2.0m

Measurements should be used as a guideline only.

GROUND FLOOR

FIRST FLOOR

Disclaimer: Information contained within this publication is for guidance only and does not constitute a contract, part of a contract or a warranty. It should be noted that the representation of Woodsome Avenue, where similar to the development, may not be accurate in every respect. At the time of going to press planning permission and listed building consent had not been obtained for the plans displayed herein and therefore they may be subject to change. Photography may not be of actual interiors. These particulars should not be relied upon as accurately describing any of the specific matters described by an order under the Property Misdescriptions Act 1991 due to their forward nature.

# Woodsome Avenue, Mirfield

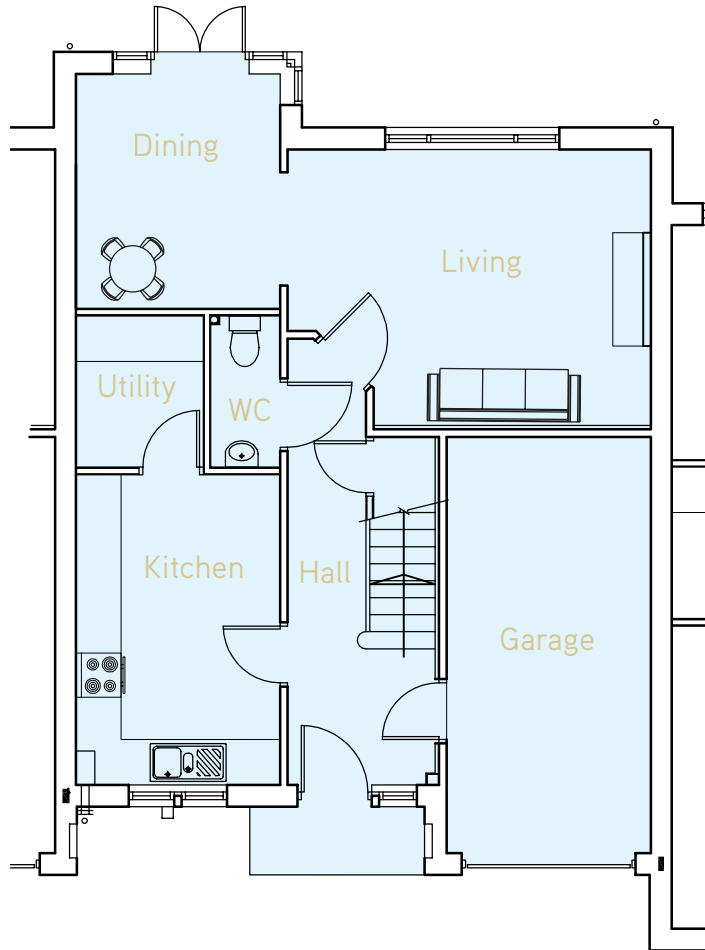


 **Lowngate Homes Ltd**  
*Craftsman Built Homes*

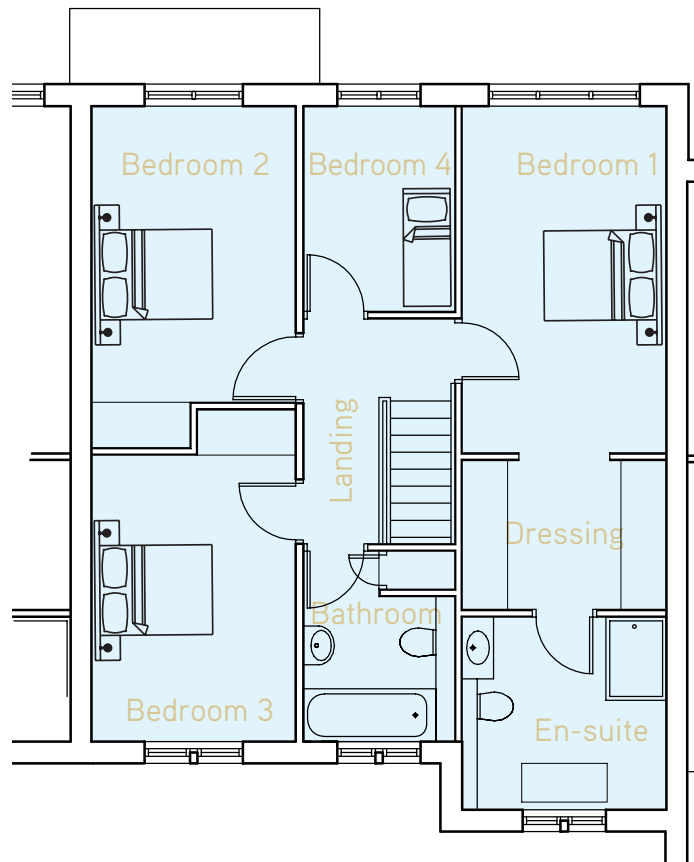


## PLOTS 2 & 4

### Town House



GROUND FLOOR



FIRST FLOOR

#### Specification:

Windows – Cills to be painted timber.

Doors – 1981mm high, white 6 panelled doors.

Heating System – Gas fired central heating system, with white painted steel radiators, time clock, room thermostat, installed to NHBC class 1 standards.

Security – Supplied with a burglar alarm system to BS4737 (Part 1 1986) including external door detectors and PIR detectors.

#### Kitchen:

Choice of oak style kitchen – Hamilton range.

Double oven, fridge freezer, laminate worktops, dishwasher, stainless steel sink unit with mono mixer. Hob and extractor mounted in base units.

#### Bathroom:

White bathroom suite, with close coupled w.c. suite with basin and pedestal. Chrome mixer taps and chrome plated heated ladder towel rail.

#### Ensuite:

Cast resin shower tray, thermostatic shower, glass shower screen. Close coupled w.c. suite, w.h. basin and pedestal. Chrome plated heated ladder towel rail.

# Woodsome Avenue, Mirfield



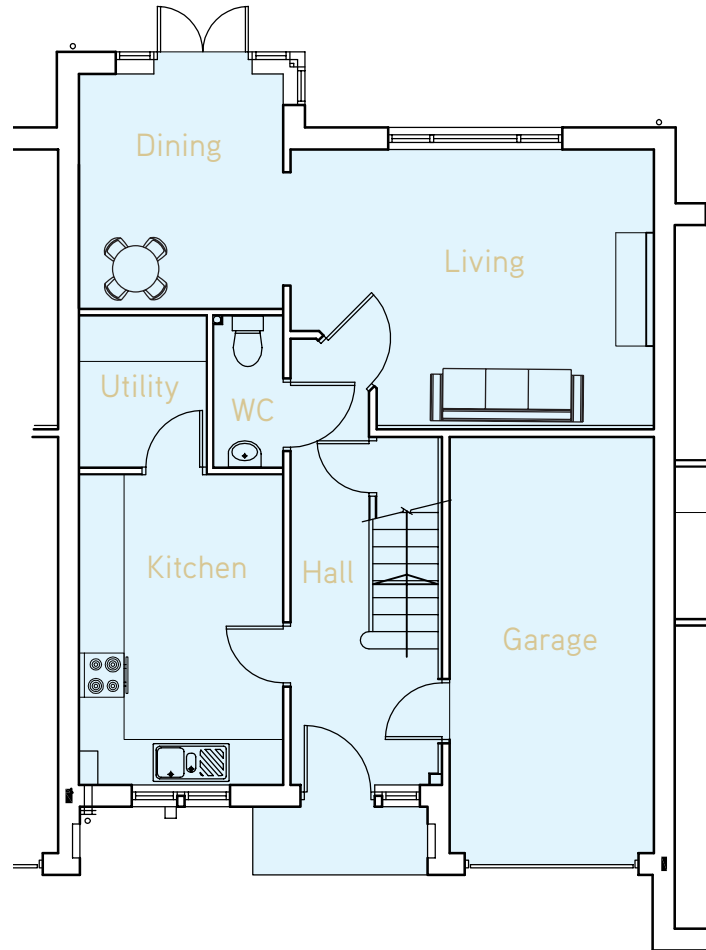
Towngate Homes Limited:  
Burdwell Works, 172 New Mill Road,  
Brockholes Huddersfield HD9 7AZ  
t: 01484 667777 f: 01484 662777  
julia\_hill@towngate.plc.uk www.towngatehomes.co.uk

Cookson Homes  
Head Office:  
1 Firth Street Huddersfield HD1 3BB  
t: +44 (0) 1484 530084  
f: +44 (0) 1484 543795  
info@cooksonhomes.com  
www.cooksonhomes.com

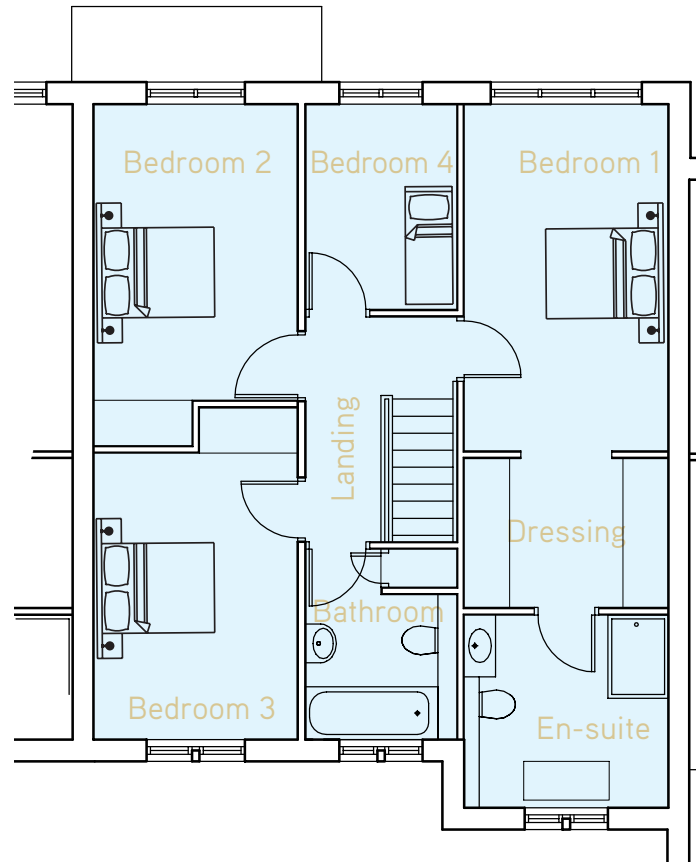


## PLOTS 2 & 4

### Town House



GROUND FLOOR



FIRST FLOOR

#### GROUND FLOOR

- LOUNGE:**  
4.8m x 3.7m
- DINING:**  
3.1m x 2.7m
- KITCHEN:**  
2.7m x 4.1m
- UTILITY:**  
1.7m x 2.0m
- WC:**  
0.9m x 2.0m
- HALL:**  
2.0m x 4.6m
- GARAGE:**  
2.7m x 5.5m

#### FIRST FLOOR

- BEDROOM 1:**  
4.6m x 2.7m
- EN-SUITE:**  
1.6m x 2.7m
- DRESSING ROOM:**  
2.0m x 2.7m
- BEDROOM 2:**  
4.5m x 2.7m
- BEDROOM 3:**  
3.8m x 2.7m
- BEDROOM 4:**  
2.0m x 2.7m
- BATHROOM:**  
2.5m x 2.0m

Measurements should be used as a guideline only.

Disclaimer: Information contained within this publication is for guidance only and does not constitute a contract, part of a contract or a warranty. It should be noted that the representation of Woodsome Avenue, where similar to the development, may not be accurate in every respect. At the time of going to press planning permission and listed building consent had not been obtained for the plans displayed herein and therefore they may be subject to change. Photography may not be of actual interiors. These particulars should not be relied upon as accurately describing any of the specific matters described by an order under the Property Misdescriptions Act 1991 due to their forward nature.

# Woodsome Avenue, Mirfield

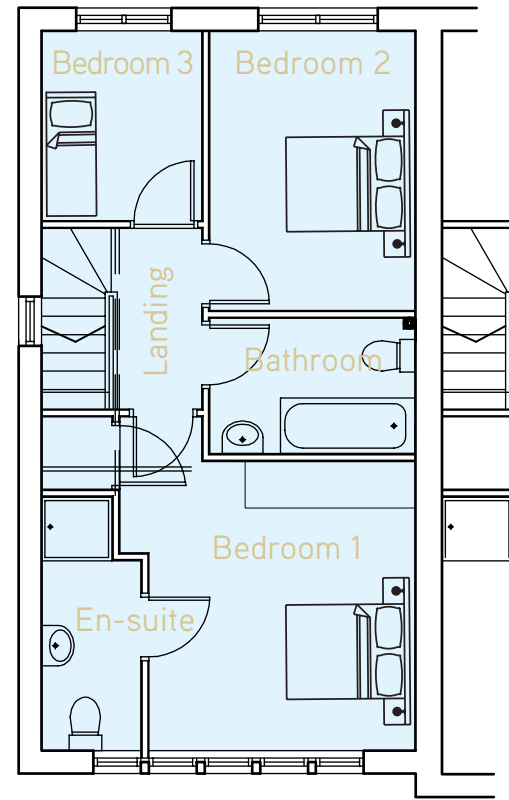
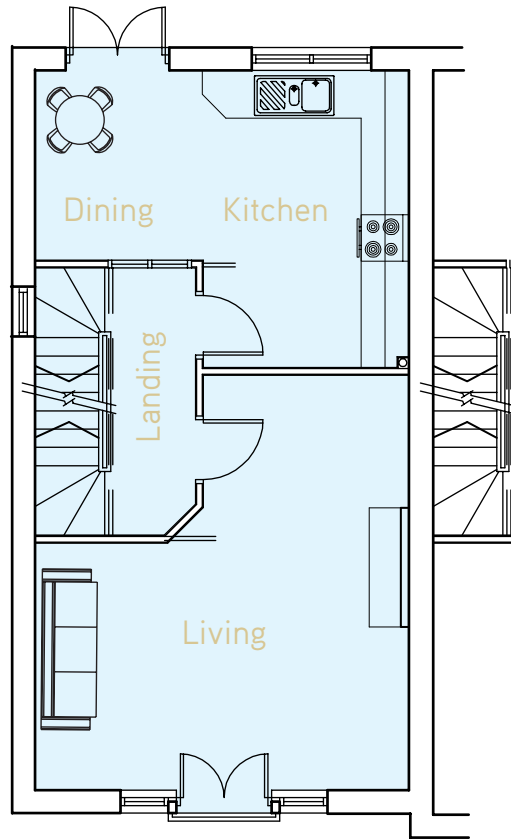
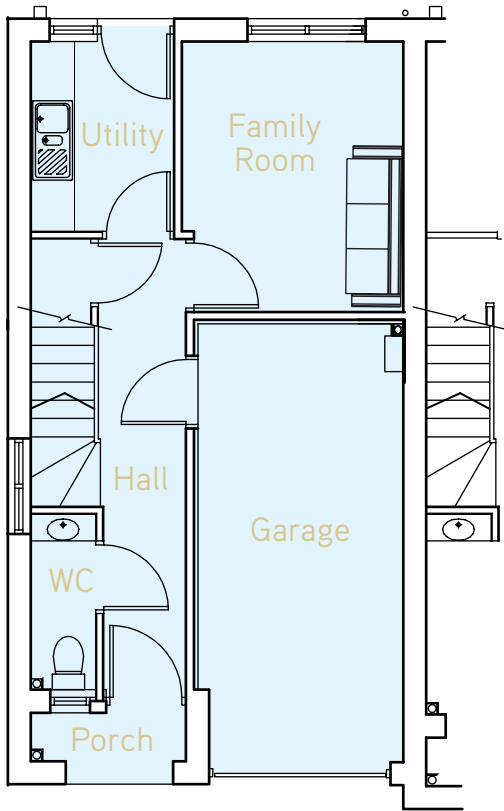


 **Lowngate Homes Ltd**  
*Craftsman Built Homes*



## PLOTS 5 & 6

Semi-Detached



GROUND FLOOR

FIRST FLOOR

SECOND FLOOR

### Specification:

Windows – Cills to be painted timber.

Doors – 1981mm high, white 6 panelled doors.

Heating System – Gas fired central heating system, with white painted steel radiators, time clock, room thermostat, installed to NHBC class 1 standards.

Security– Supplied with a burglar alarm system to BS4737 (Part 1 1986) including external door detectors and PIR detectors.

### Kitchen:

Choice of oak style kitchen – Hamilton range.

Double oven, fridge freezer, laminate worktops, dishwasher, stainless steel sink unit with mono mixer. Hob and extractor mounted in base units.

### Bathroom:

White bathroom suite, with close coupled w.c. suite with basin and pedestal. Chrome mixer taps and chrome plated heated ladder towel rail.

### Ensuite:

Cast resin shower tray, thermostatic shower, glass shower screen. Close coupled w.c. suite, w.h. basin and pedestal. Chrome plated heated ladder towel rail.

# Woodsome Avenue, Mirfield



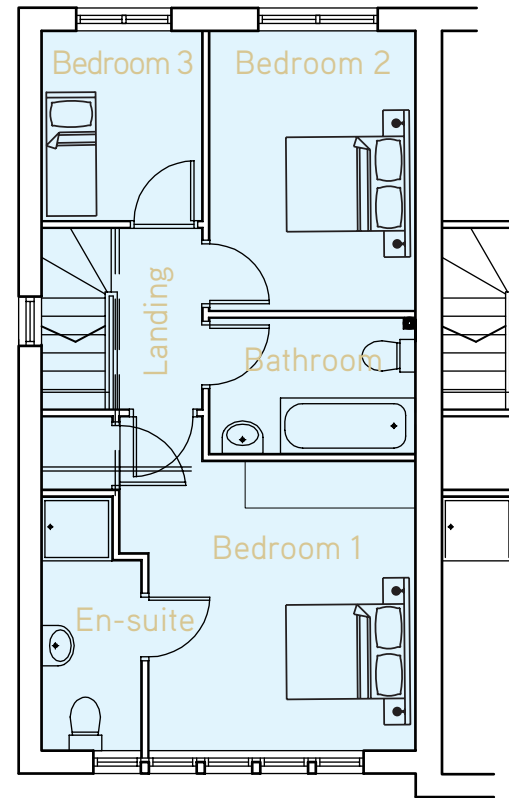
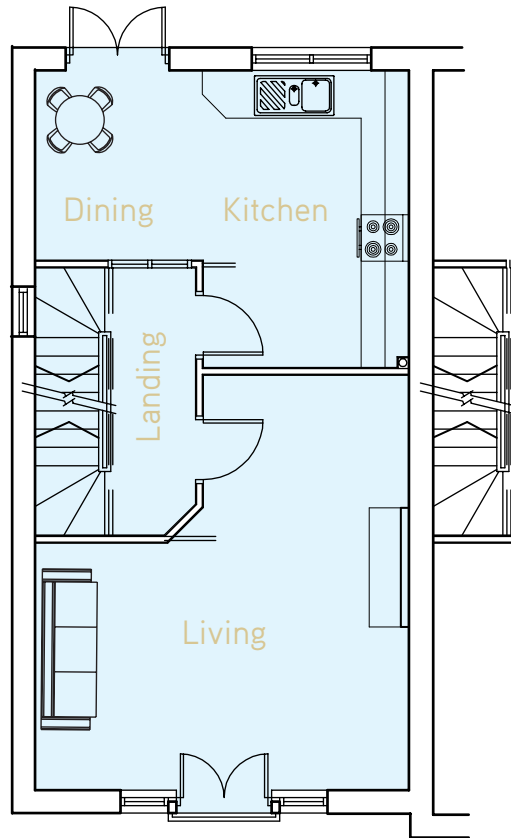
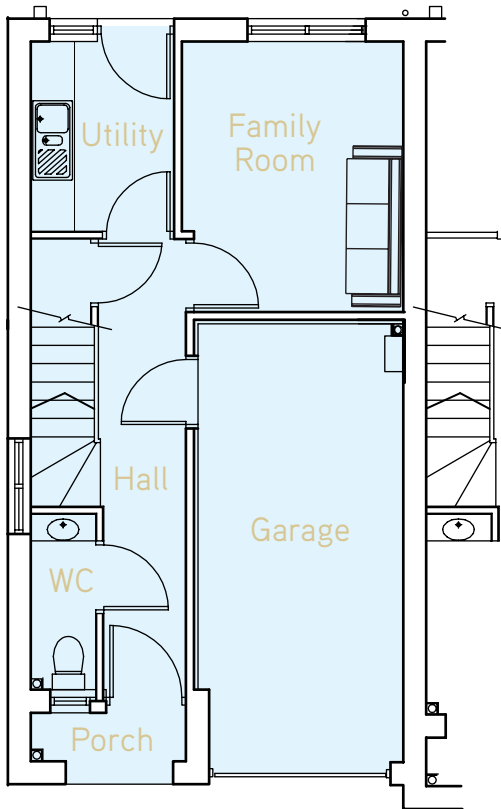
Towngate Homes Limited:  
Burdwell Works, 172 New Mill Road,  
Brockholes Huddersfield HD9 7AZ  
t: 01484 667777 f: 01484 662777  
julia\_hill@towngate.plc.uk www.towngatehomes.co.uk

Cookson Homes  
Head Office:  
1 Firth Street Huddersfield HD1 3BB  
t: +44 (0) 1484 530084  
f: +44 (0) 1484 543795  
info@cooksonhomes.com  
www.cooksonhomes.com



## PLOTS 5 & 6

Semi-Detached



### GROUND FLOOR

**FAMILY ROOM/  
BEDROOM 4:**  
3.3m x 3.3m

**WC:**  
1.9m x 0.8m

**GARAGE:**  
2.6m x 5.2m

**UTILITY:**  
2.4m x 1.8m

**HALL:**  
5.3m x 1.9m

### FIRST FLOOR

**DINING:**  
2.1m x 2.4m

**LOUNGE:**  
4.9m x 4.7m

**KITCHEN:**  
2.5m x 3.7m

**LANDING:**  
1.0m x 3.4m

### SECOND FLOOR

**BEDROOM 1:**  
3.3m x 3.3m

**BEDROOM 3:**  
2.0m x 2.4m

**EN-SUITE:**  
1.2m x 2.9m

**BATHROOM:**  
2.6m x 1.7m

**BEDROOM 2:**  
3.5m x 2.6m

**LANDING:**  
2.3m x 1.0m

Measurements should be used as a guideline only.

Disclaimer: Information contained within this publication is for guidance only and does not constitute a contract, part of a contract or a warranty. It should be noted that the representation of Woodsome Avenue, where similar to the development, may not be accurate in every respect. At the time of going to press planning permission and listed building consent had not been obtained for the plans displayed herein and therefore they may be subject to change. Photography may not be of actual interiors. These particulars should not be relied upon as accurately describing any of the specific matters described by an order under the Property Misdescriptions Act 1991 due to their forward nature.

GROUND FLOOR

FIRST FLOOR

SECOND FLOOR

# Woodsome Avenue, Mirfield

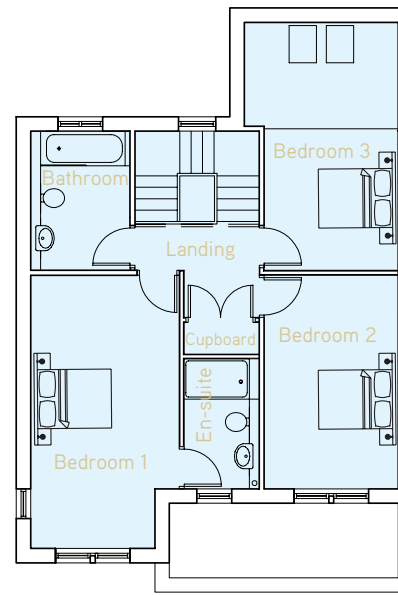
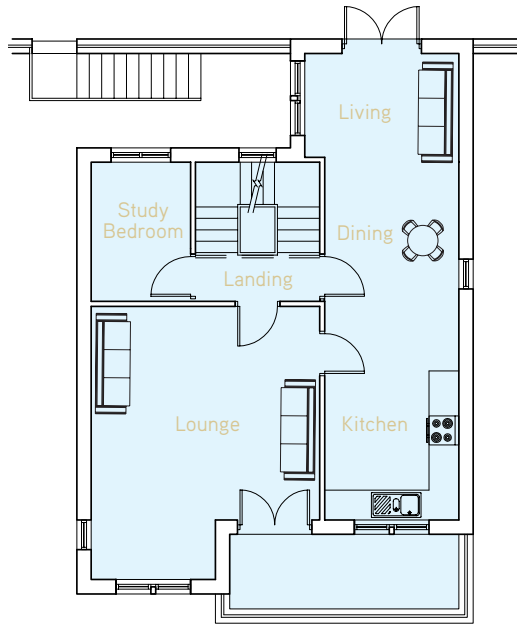
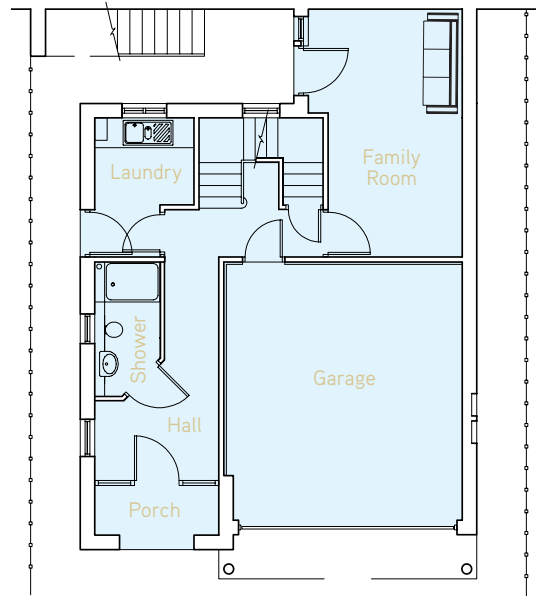


 **Lowngate Homes Ltd**  
*Craftsman Built Homes*



## PLOTS 7 & 8

Detached



GROUND FLOOR

FIRST FLOOR

SECOND FLOOR

### Specification:

Windows – Cills to be painted timber.

Doors – 1981mm high, oak veneered 4 panelled doors.

Heating System – Gas fired central heating system, with white painted steel radiators, time clock, room thermostat, installed to NHBC class 1 standards.

Security– Supplied with a burglar alarm system to BS4737 (Part 1 1986) including external door detectors and PIR detectors.

### Kitchen:

Choice of oak style kitchen – Hamilton range. Double oven, fridge freezer, granite worktops and upstand, dishwasher and stainless steel sink unit with mono mixer. Hob and extractor mounted in base units.

### Bathroom:

White bathroom suite, with close coupled w.c. suite with basin and pedestal. Chrome mixer taps and chrome plated heated ladder towel rail.

### Ensuite:

Cast resin shower tray, thermostatic shower, glass shower screen. Close coupled w.c. suite, w.h. basin and pedestal. Chrome plated heated ladder towel rail.

# Woodsome Avenue, Mirfield



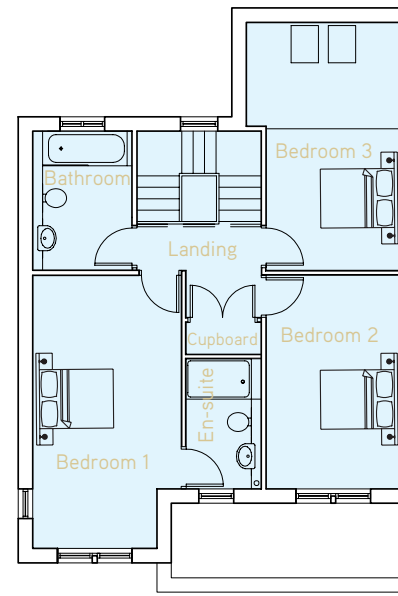
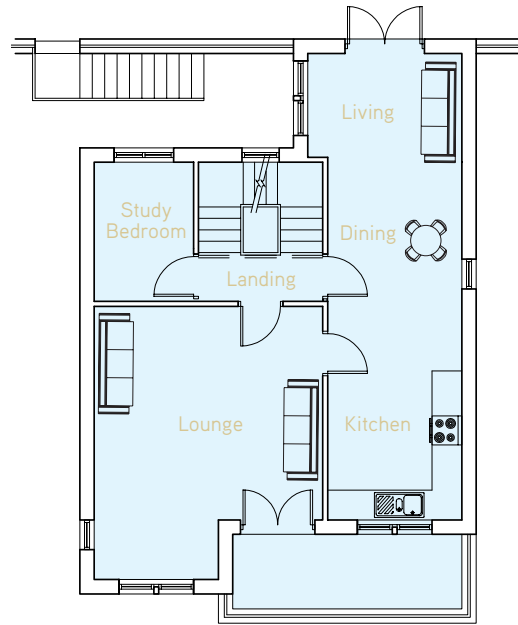
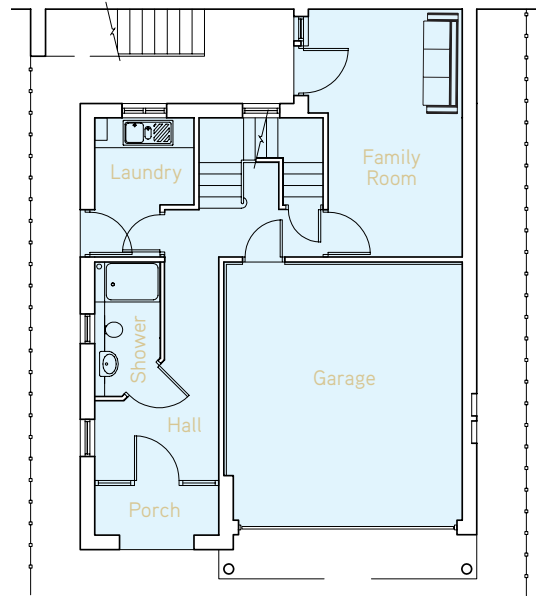
Towngate Homes Limited:  
Burdwell Works, 172 New Mill Road,  
Brockholes Huddersfield HD9 7AZ  
t: 01484 667777 f: 01484 662777  
julia\_hill@towngate.plc.uk www.towngatehomes.co.uk

Cookson Homes  
Head Office:  
1 Firth Street Huddersfield HD1 3BB  
t: +44 (0) 1484 530084  
f: +44 (0) 1484 543795  
info@cooksonhomes.com  
www.cooksonhomes.com



## PLOTS 7 & 8

Detached



### GROUND FLOOR

<b>FAMILY ROOM/ BEDROOM 4:</b> 5.0m x 3.1m	<b>SHOWER ROOM:</b> 2.7m x 1.3m
<b>LAUNDRY:</b> 2.8m x 2.0m	<b>HALL:</b> 4.4m x 2.5m
	<b>GARAGE:</b> 4.8m x 5.2m

### FIRST FLOOR

<b>LIVING/ DINING:</b> 6.4m x 3.1m	<b>LANDING:</b> 2.5m x 0.9m
<b>KITCHEN:</b> 3.0m x 2.7m	<b>STUDY:</b> 2.8m x 2.0m
<b>LOUNGE:</b> 5.5m x 4.6m	

### SECOND FLOOR

<b>BEDROOM 1:</b> 5.5m x 3.0m	<b>BEDROOM 3:</b> 5.0m x 3.1m
<b>EN-SUITE:</b> 1.5m x 2.6	<b>BATHROOM:</b> 2.8m x 2.0m
<b>BEDROOM 2:</b> 4.3m x 2.7m	<b>LANDING:</b> 2.5m x 0.9m

Measurements should be used as a guideline only.

Disclaimer: Information contained within this publication is for guidance only and does not constitute a contract, part of a contract or a warranty. It should be noted that the representation of Woodsome Avenue, where similar to the development, may not be accurate in every respect. At the time of going to press planning permission and listed building consent had not been obtained for the plans displayed herein and therefore they may be subject to change. Photography may not be of actual interiors. These particulars should not be relied upon as accurately describing any of the specific matters described by an order under the Property Misdescriptions Act 1991 due to their forward nature.

GROUND FLOOR

FIRST FLOOR

SECOND FLOOR

# Woodsome Avenue, Mirfield

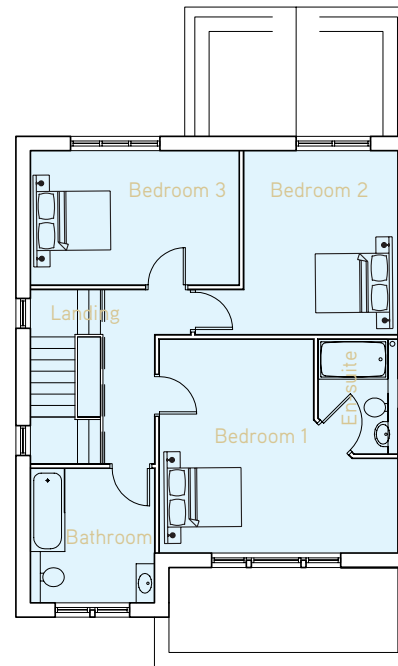
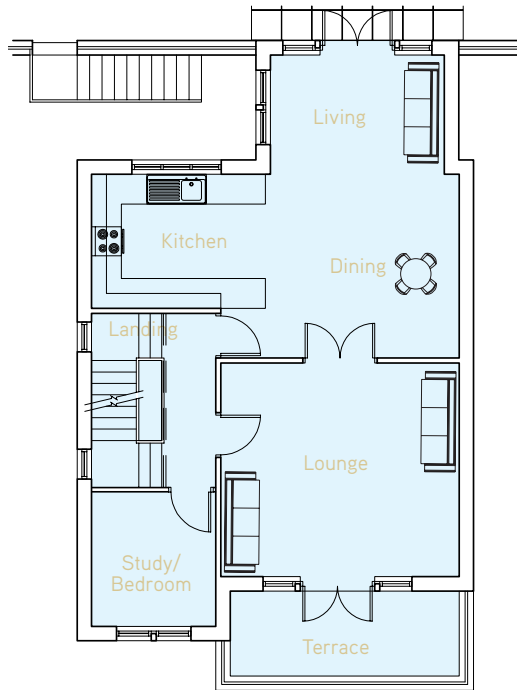
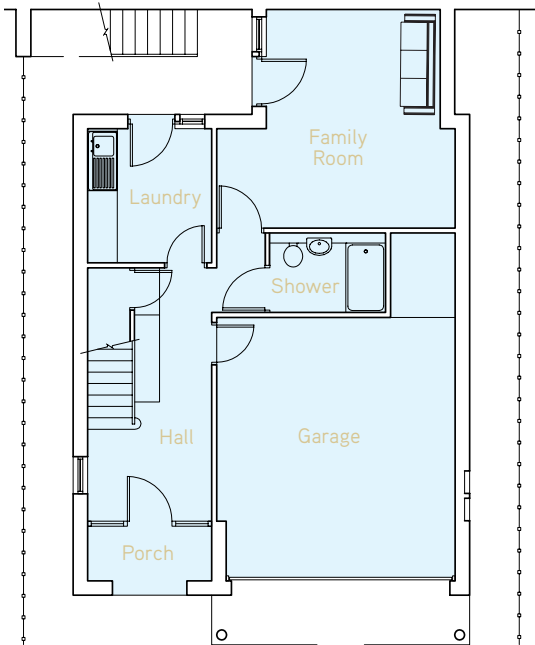


 **Lowngate Homes Ltd**  
*Craftsman Built Homes*



## PLOTS 9 & 11

Detached



GROUND FLOOR

FIRST FLOOR

SECOND FLOOR

### Specification:

Windows – Cills to be painted timber.

Doors – 1981mm high, oak veneered 4 panelled doors.

Heating System – Gas fired central heating system, with white painted steel radiators, time clock, room thermostat, installed to NHBC class 1 standards.

Security– Supplied with a burglar alarm system to BS4737 (Part 1 1986) including external door detectors and PIR detectors.

### Kitchen:

Choice of oak style kitchen – Hamilton range. Double oven, fridge freezer, granite worktops and upstand, dishwasher and stainless steel sink unit with mono mixer. Hob and extractor mounted in base units.

### Bathroom:

White bathroom suite, with close coupled w.c. suite with basin and pedestal. Chrome mixer taps and chrome plated heated ladder towel rail.

### Ensuite:

Cast resin shower tray, thermostatic shower, glass shower screen. Close coupled w.c. suite, w.h. basin and pedestal. Chrome plated heated ladder towel rail.

# Woodsome Avenue, Mirfield



Towngate Homes Limited:  
Burdwell Works, 172 New Mill Road,  
Brockholes Huddersfield HD9 7AZ  
t: 01484 667777 f: 01484 662777  
julia\_hill@towngate.plc.uk www.towngatehomes.co.uk

Cookson Homes  
Head Office:  
1 Firth Street Huddersfield HD1 3BB  
t: +44 (0) 1484 530084  
f: +44 (0) 1484 543795  
info@cooksonhomes.com  
www.cooksonhomes.com



## PLOTS 9 & 11

Detached



### GROUND FLOOR

<b>FAMILY ROOM/ BEDROOM 4:</b> 3.5m x 4.4m	<b>SHOWER ROOM:</b> 2.3m x 1.6m
<b>LAUNDRY:</b> 2.5m x 2.7m	<b>HALL:</b> 5.1m x 2.5m
	<b>GARAGE:</b> 4.8m x 5.3m

### FIRST FLOOR

<b>LIVING/ DINING:</b> 2.5m x 6.1m	<b>LANDING:</b> 1.0m x 3.4m
<b>KITCHEN:</b> 2.7m x 3.6m	<b>STUDY:</b> 2.5m x 2.7m
<b>LOUNGE:</b> 4.8m x 4.3m	

### SECOND FLOOR

<b>BEDROOM 1:</b> 4.8m x 4.3m	<b>BEDROOM 3:</b> 4.2m x 2.7m
<b>EN-SUITE:</b> 1.6m x 2.3m	<b>BATHROOM:</b> 2.7m x 2.5m
<b>BEDROOM 2:</b> 3.1m x 3.7m	<b>LANDING:</b> 1.0m x 3.4m

Measurements should be used as a guideline only.

Disclaimer: Information contained within this publication is for guidance only and does not constitute a contract, part of a contract or a warranty. It should be noted that the representation of Woodsome Avenue, where similar to the development, may not be accurate in every respect. At the time of going to press planning permission and listed building consent had not been obtained for the plans displayed herein and therefore they may be subject to change. Photography may not be of actual interiors. These particulars should not be relied upon as accurately describing any of the specific matters described by an order under the Property Misdescriptions Act 1991 due to their forward nature.

GROUND FLOOR

FIRST FLOOR

SECOND FLOOR

# Woodsome Avenue, Mirfield

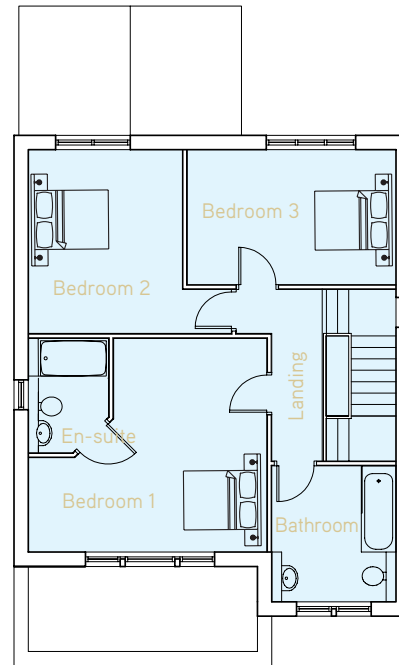
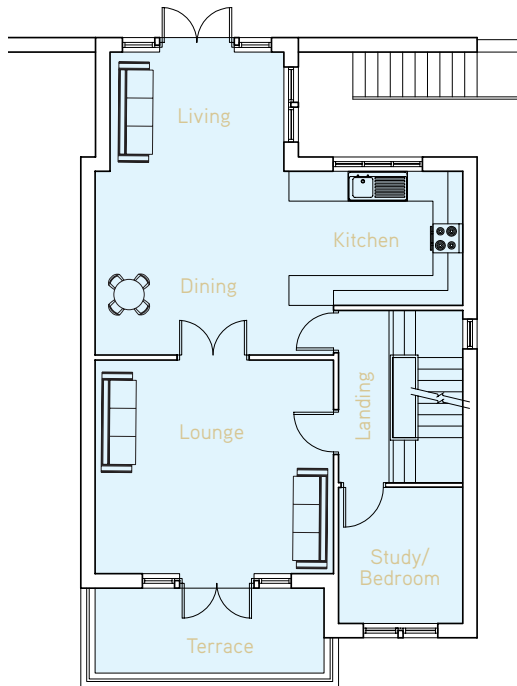
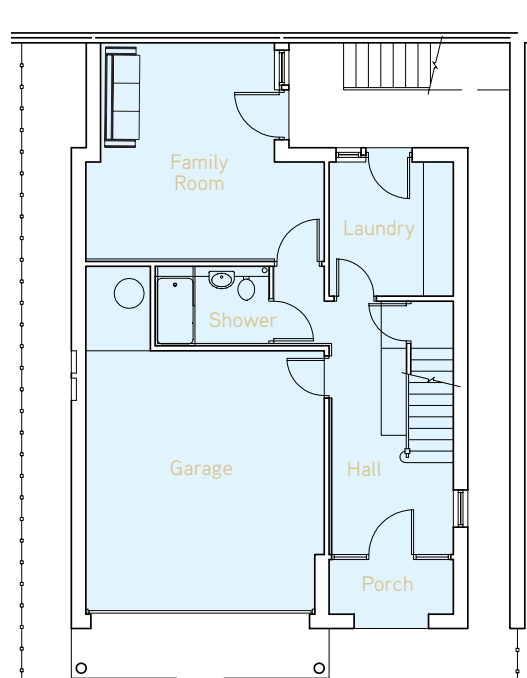


 **Lowngate Homes Ltd**  
*Craftsman Built Homes*



## PLOTS 10 & 12

Detached



GROUND FLOOR

FIRST FLOOR

SECOND FLOOR

### Specification:

Windows – Cills to be painted timber.

Doors – 1981mm high, oak veneered 4 panelled doors.

Heating System – Gas fired central heating system, with white painted steel radiators, time clock, room thermostat, installed to NHBC class 1 standards.

Security– Supplied with a burglar alarm system to BS4737 (Part 1 1986) including external door detectors and PIR detectors.

### Kitchen:

Choice of oak style kitchen – Hamilton range. Double oven, fridge freezer, granite worktops and upstand, dishwasher and stainless steel sink unit with mono mixer. Hob and extractor mounted in base units.

### Bathroom:

White bathroom suite, with close coupled w.c. suite with basin and pedestal. Chrome mixer taps and chrome plated heated ladder towel rail.

### Ensuite:

Cast resin shower tray, thermostatic shower, glass shower screen. Close coupled w.c. suite, w.h. basin and pedestal. Chrome plated heated ladder towel rail.

# Woodsome Avenue, Mirfield



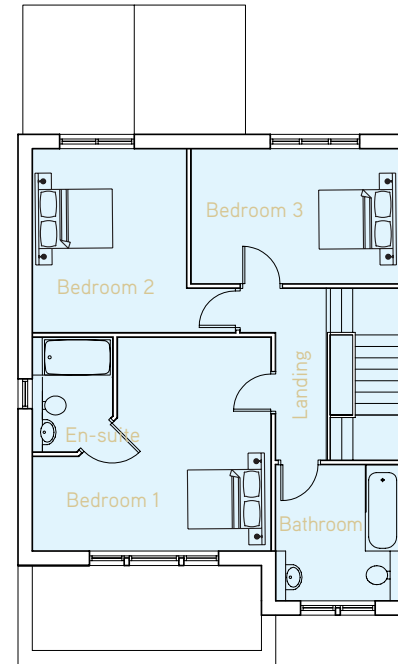
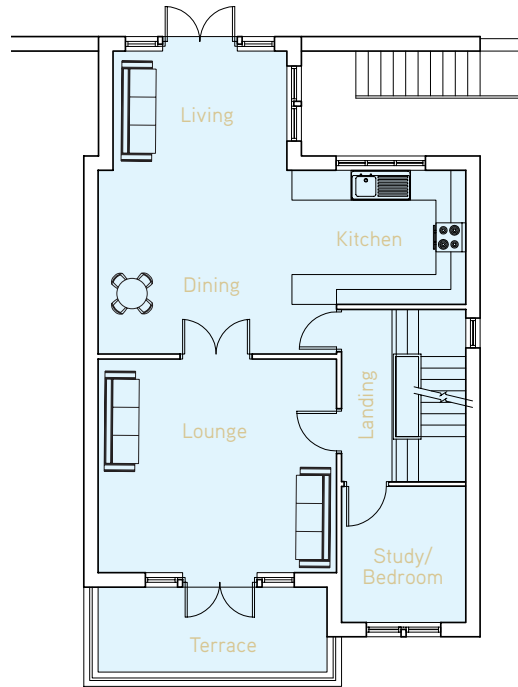
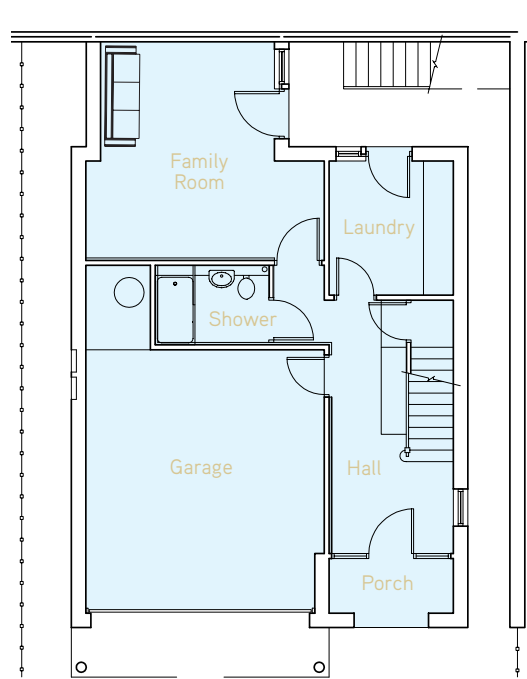
Towngate Homes Limited:  
Burdwell Works, 172 New Mill Road,  
Brockholes Huddersfield HD9 7AZ  
t: 01484 667777 f: 01484 662777  
julia\_hill@towngate.plc.uk www.towngatehomes.co.uk

Cookson Homes  
Head Office:  
1 Firth Street Huddersfield HD1 3BB  
t: +44 (0) 1484 530084  
f: +44 (0) 1484 543795  
info@cooksonhomes.com  
www.cooksonhomes.com



## PLOTS 10 & 12

Detached



### GROUND FLOOR

<b>FAMILY ROOM/ BEDROOM 4:</b> 3.5m x 4.4m	<b>SHOWER ROOM:</b> 2.3m x 1.6m
<b>LAUNDRY:</b> 2.5m x 2.7m	<b>HALL:</b> 5.1m x 2.5m
	<b>GARAGE:</b> 4.8m x 5.3m

### FIRST FLOOR

<b>LIVING/ DINING:</b> 2.5m x 6.1m	<b>LANDING:</b> 1.0m x 3.4m
<b>KITCHEN:</b> 2.7m x 3.6m	<b>STUDY:</b> 2.5m x 2.7m
<b>LOUNGE:</b> 4.8m x 4.3m	

### SECOND FLOOR

<b>BEDROOM 1:</b> 4.8m x 4.3m	<b>BEDROOM 3:</b> 4.2m x 2.7m
<b>EN-SUITE:</b> 1.6m x 2.3m	<b>BATHROOM:</b> 2.7m x 2.5m
<b>BEDROOM 2:</b> 3.1m x 3.7m	<b>LANDING:</b> 1.0m x 3.4m

Measurements should be used as a guideline only.

Disclaimer: Information contained within this publication is for guidance only and does not constitute a contract, part of a contract or a warranty. It should be noted that the representation of Woodsome Avenue, where similar to the development, may not be accurate in every respect. At the time of going to press planning permission and listed building consent had not been obtained for the plans displayed herein and therefore they may be subject to change. Photography may not be of actual interiors. These particulars should not be relied upon as accurately describing any of the specific matters described by an order under the Property Misdescriptions Act 1991 due to their forward nature.

GROUND FLOOR

FIRST FLOOR

SECOND FLOOR