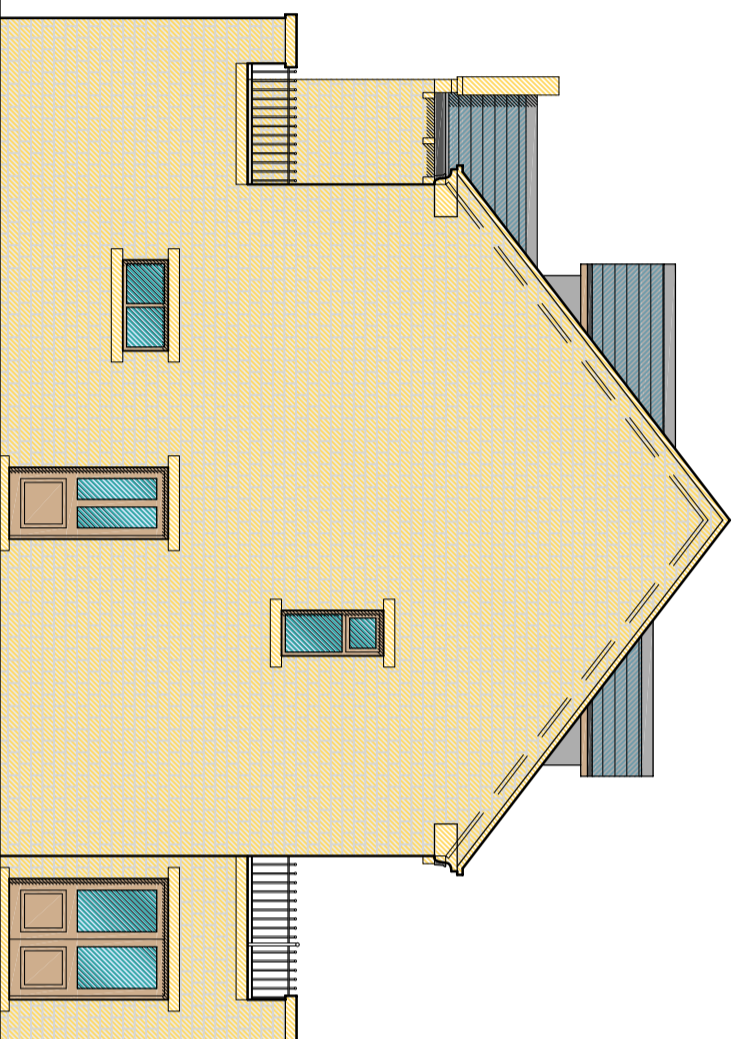
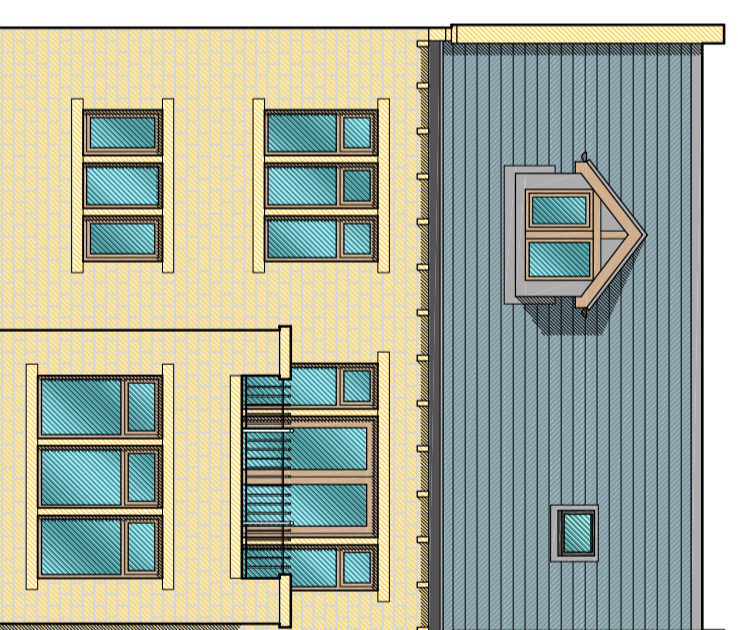


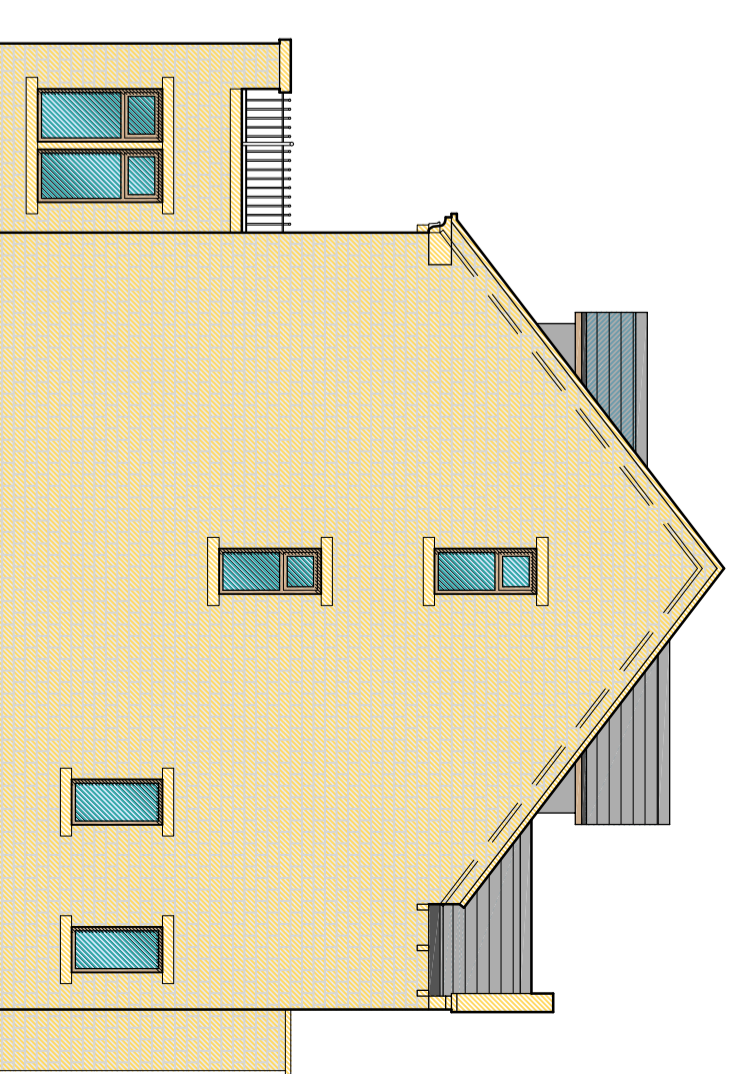
Front Elevation



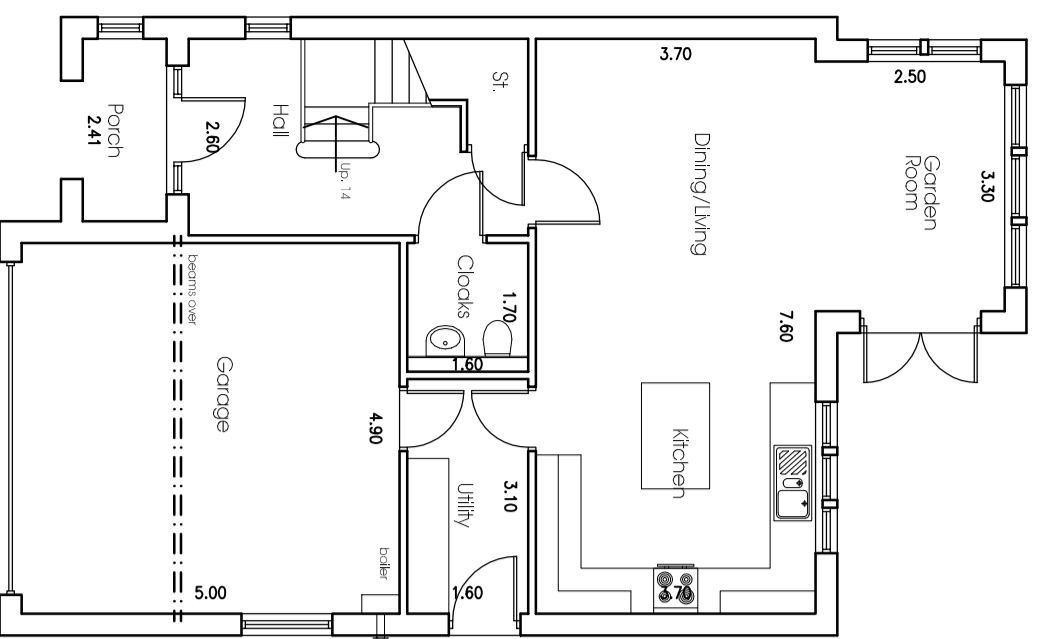
Side Elevation



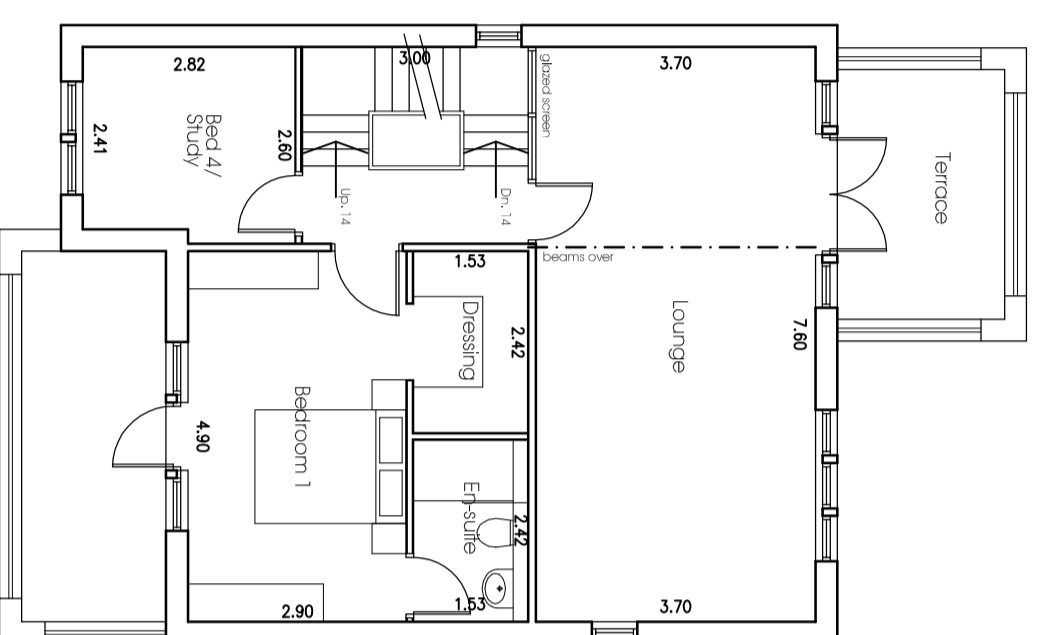
Rear Elevation



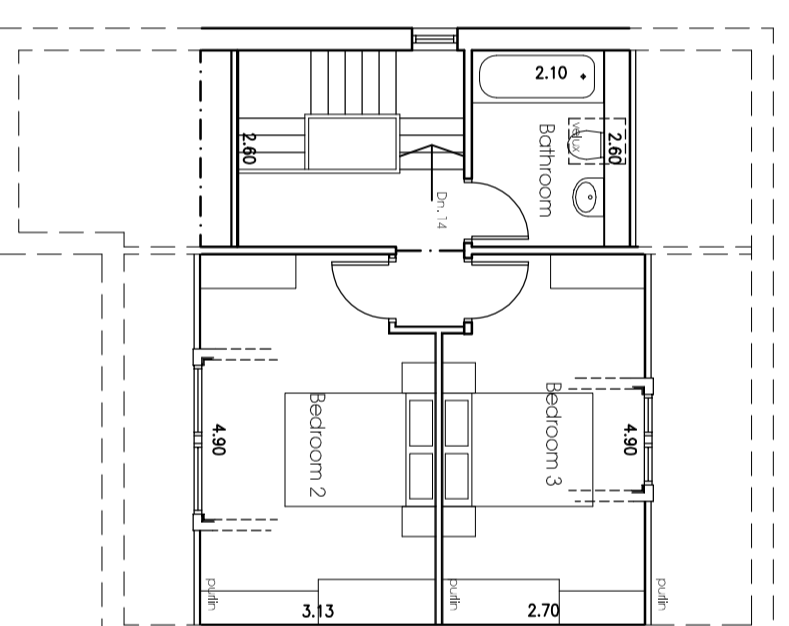
Side Elevation



Ground Floor



First Floor



Second Floor

REVISIONS:

Residential Development
at Broomfield Avenue
Savile Park
Halifax

Plots 1&2 1820 sq ft

Farrar Bamforth Associates Ltd.

Architectural & Building Consultants

51, Trinity Street, Huddersfield HD1 4DN
Tel. (01484) 424008 Fax: (01484) 512305
E-mail : design@farrarbamforth.co.uk
Website : www.farrarbamforth.co.uk

Drawn JMA

Date August 2006

Scales 1:100

Drawing No. 06/D60/08